



IFYE NEWS

The Official Publication of the International
Four-H Youth Exchange Association of the USA



Summer/Fall 2004

2004 National IFYE Conference National IFYE Conference 2005

ST. PAUL, MINNESOTA

“Waves of Today,” the theme of the 42nd National IFYE Conference, June 23-27, in St. Paul, the capital city of Minnesota celebrating its 150th anniversary in 2004, had over 250 alumni and friends waving throughout the event. Conferees were coming and going with an average of 200+ on hand for each meal. In addition, a 12-member 4-H leader/staff delegation from Korea made a visit during the event.

The theme focused on Minnesota’s blue waves of water, amber waves of grain, and the multicolored waves of immigrants that have influenced the development of Minnesota throughout its history.

The conference got underway with everyone developing a styrofoam wave portraying their host country or one of their experiences, which Program Chair and Artist-in-Residence Bill Svendsgaard, MN-Switzerland 1961, used in developing the “Waves of Today” sculpture that was the central focus throughout the conference.

A highlight of the conference was the final evening banquet and program featuring Tou “Cool” Ger Xiong, Hmong storyteller, comedian and rap artist, who entertained with an impressive, factual and soul-searching presentation related to “Waves of New Americans,” including the story of his personal and family experience of immigrating to this country. (Information on Tou and his program is available at www.gohmongboy.com)

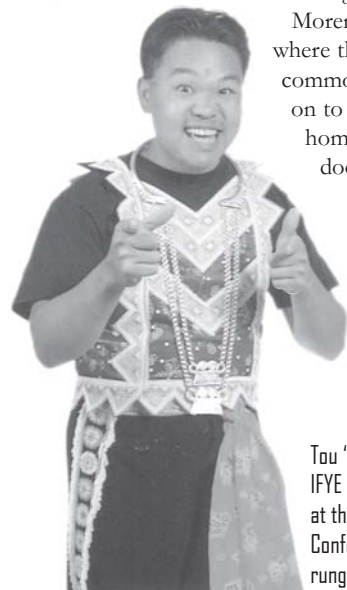
Conferees were welcomed by Randy Kelly, Mayor of St. Paul, and Dorothy McCargo Freeman, State 4-H Leader. Keynoting the conference was University of Minnesota Extension’s diversity specialist Juan Moreno addressing “Waves of Change: Making Ourselves at home in the world.”

Morena pointed out that “we are living in an age of transition and paradox, where the only constants are the ‘waves of change’ and what we seem to have in common with each other are our differences. After expanding on this, he went on to say, “When you were an IFYE participant you had to physically leave home, now you don’t have to because the world is literally at your doorstep.” (A copy of his presentation is available from the editor.)

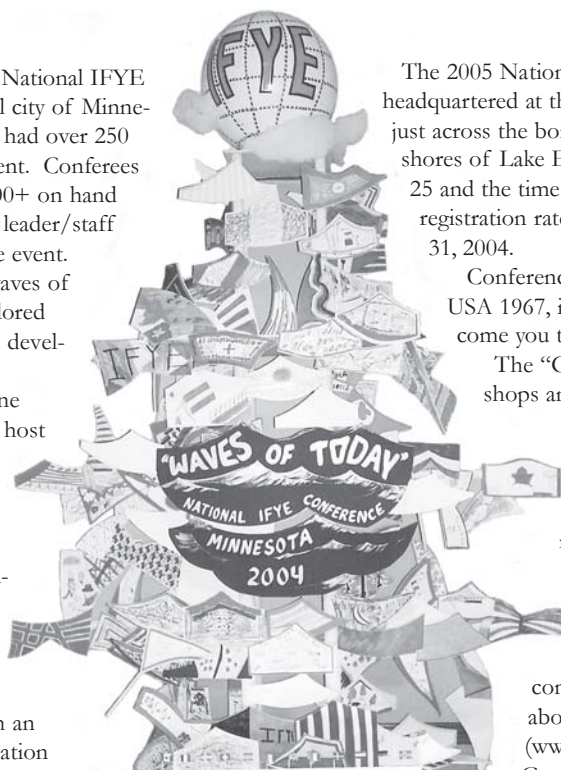
Other speakers included Jim Herne from Land O’Lakes addressing “Waves of Grain,” and Shegitu Kebede and family sharing personal reflections on the immigrant experience related to “Waves of Immigration.”

Special entertainment included the Minnesota Scandinavian Ensemble with LeRoy Larson and Charlie McGuire, national known guitarist and folksinger. Many conferees - adults and

continued on page 4



Tou “Cool” Ger Xiong (left), Minnesota Hmong storyteller, comedian and rap artist, challenged, inspired, and wowed conferees at the National IFYE Conference banquet in St. Paul with his presentation, “Waves of New Americans.” Geraldine Miller Campbell (right), New Zealand-USA 1967, at the time and as chair of the 1977 World IFYE Conference in Christchurch, New Zealand, who now chairs the 2005 National “Great Lakes” IFYE Conference to be held in Chatham, Ontario, Canada next June. She holds the Swiss bell, a gift of the Switzerland IFYE Association, which is rung to open and close each national and world conference. Meet the Geraldine of today on page 8.



“Waves of Today” Sculpture

CHATHAM, ONTARIO

The 2005 National “Great Lakes” IFYE Conference will be headquartered at the Wheels Inn in Chatham, Ontario, Canada, just across the border from the Detroit area and near the shores of Lake Erie and Lake St. Clair. The dates are June 21-25 and the time to register is now! The “early bird” best registration rate deadline is earlier than usual - December 31, 2004.

Conference chair Geraldine Campbell, New Zealand-USA 1967, is waiting with the Swiss bell (below) to welcome you to “Another World Close to Home!”

The “Great Lakes” will be the theme of the workshops and several of the events of the week.

Geraldine, and her husband and committee member, Jamey, along with Michigan alumni, serving as the host state, encourage you to come a day early and spend a night with a rural Canadian host family.

As you complete the registration form, don’t forget to make your reservations at the Wheels Inn - dial 1-800-265-5257 and quote code #10562 (www.wheelsinn.com). Camp sites are available on Lake St. Clair about 45 minutes away - 1-519-354-8423 (www.mitchellsbaymarinepark.com). Join Geraldine now on pages 8/9 for more conference information and the registration form. ☆

IFYE Association Board of Directors

Region A **Mary Wengryn (NJ-Finland 54)**

76 Beekman Lane
Hillsborough, NJ 08844
(H) 908/369-4135

Jennifer Barton (NH-Botswana 97)

653 Meadows Road #1
Jefferson, NH 03583
(H) 603/586-7705

Frederick E. Fisher (PA-Pakistan 57)

946 Carlisle Road
Biglerville, PA 17307
(H) 717/677-6387

Region B **Stephany Duvall (GA-Denmark 99)**

401 Coventry Estates Boulevard
Deltona, FL 32725
(H) 407/256-9614

Duain W. Vierow (MN-Netherlands 57)

1307 Santa Rosa Court
Lady Lake, FL 32159
(H) 352/750-3494

Caron Beard (OR-New Zealand 59)

5009 Big Springs Road
Friendsville, TN 37737
(H) 865/995-2807

Region C **Ronald D. Petrak (IA-Ireland 53)**

1507 Pennsylvania Avenue
Des Moines, IA 50316-2237
(H) 515/262-3691

Mary Kay Munson (KS-India 65)

1606 N. Spring Valley Road
Junction City, KS 66441
(H) 785/238-3631

Sally A. Narhi (MI-Taiwan 70)

13634 N. Laird Road
Pelkie, MI 49958
(H) 906/338-2849

Region D **Jennifer V. Anderson (MT-Estonia 00)**

P.O. Box 911
Meeker, CO 81641
(H) 970/878-3569

Paul-Baptiste Baca (NM-Finland 90)

10566 Ramah Drive NW
Albuquerque, NM 87114
(H) 505/899-6434

David J. White (CA-Philippines 79)

2528 O'Brien Court
Bend, OR 97701
(H) 541/330-9679

Past President

Melvin J. Thompson (MI-Turkey 53)

5811 Lone Oak Drive East
Bethesda, MD 20814-1843
(H) 301/493-5301

Ex-Officio **USDA/CREES**

National 4-H Headquarters

1400 Independence Ave. Stop 22225
Washington, DC 20250-2225

IFYE Foundation / President

Norman C. Bauer (MI-Turkey 57)

111 Woodland Trail
Anna, IL 62906
(H) 618/833-3228

IFYE Association of the USA



A Salute to Minnesota Hosts Chatham Registration, Cheers for Brian Beck, Survey, Dues/Contributions and Family

What a conference it was! What a conference just ahead! We experienced a grand "Waves of Today" event in June 2004 in St. Paul and "Another World Close to Home" awaits you in June 2005 in Chatham...that's Chatham, Ontario, just across the border in Canada!

David White, IFYE Association president, the entire board, and all in St. Paul, commend chair Janet Ahlstrom Risinger, MN-Trinidad and Tobago 1978, and all in Minnesota for a superb event! You set the bar for Chatham in 2005, Colorado Springs in 2006, and future conferences! A salute to our Minnesota hosts pictured above.

Get with Chair Geraldine on pages 1 and 8 and register for 2005 on page 9 before December 31, 2004, for the lowest fee possible! She and husband Jamey and Michigan alumni, conference hosts, look forward to your arrival in Chatham.

As we go to press, let me share sad news about an optimistic young man. Brian Beck, VA-Switzerland 2004, was in his host country just a few days when involved

in an accident on his host farm on September 29. He suffered two fractured bones in the spine, broken ribs, a mashed arm, burst blood vessels in the eye, and a collapsed lung....and then pneumonia. Indications are that he will return home as soon as he can travel. It will be some time before he'll have strength or lung capacity for regular activity, let alone farm work. Talk about being positive, he's already asked if he can be in the 2005 program!

The survey in the last issue of IFYE News generated a small return - about 2%. All supported the IFYE Association mission statement and felt strongly that their exchange experience was a positive and meaningful experience. Several indicated that it had an influence on their choice of careers. Almost all hope that the programs will be continued. In reference to IFYE News, several indicated that they do not have a computer, but even amongst those with computers, several indicated they were less likely to read it if received electronically...preferring



the printed publication. A few felt there may not be a need for 4-H exchanges with the many other opportunities available. Interestingly, the feelings about what the Association should be doing is similar to a survey in the 1960's - have a national conference and a newsletter. Few expressed an interest in state associations. Many expressed disappointment that the Extension Service and 4-H are not supporting programs as in the past.

Dues are now due for 2005! Return the form on page 11 today with your check for dues....and a contribution. If a life member, make a contribution in support of Association operations.

It was a special honor for me to be inducted into the Michigan 4-H Emerald Clover Society (ECS) in June - a quick trip during the National IFYE Conference. A related special event was held at Kettunen Center, Michigan's 4-H center, in September. A permanent recognition wall for ECS members was unveiled as part of the Center's Courtyard and Terrace, which includes a memorial arbor that my family sponsored honoring our parents, both 4-H alumni. Our mother was a 4-H volunteer leader for 56 years, having assumed leadership of the club in 1929. It was started by my great-grandmother in 1925. My family is pictured left atop the recognition wall. Next to me (left), my sister, Ethelyn, and four brothers, Maynard, Gaylord, Mark, and Horace. My dad used to tell everyone he had five boys and every one of them had a sister!

See you in Chatham!

Mel Thompson
Michigan-Turkey 1953
Editor, IFYE News ☆

President David White ☆ V. Pres. Mary Kay Munson ☆ Secretary Jennifer Anderson ☆
Treasurer Jennifer Barton ☆ IFYE News Editor Mel Thompson ☆ 2005 National IFYE Conference Chair
Geraldine Campbell jandgcam@hotmail.com, 15 Zircon Pl., Chatham N7M 5Y9, Canada; 519/380-0458

Looking Ahead



Every once in awhile, my son, Taylor goes to work with me. In my office, he occupies his time by redistributing my supply of pencils, markers, staples, and the like. In all, he does a great job of rearranging the

organized clutter.

Invariably he finds one of my notepads and starts to draw somewhat recognizable figures and landscapes. My office is decorated with his artwork. The notepad I stuffed into my briefcase before one of my recent Extension related trips had on it one of his masterpieces.

As I looked at all the swirled lines, it appeared that Taylor had unintentionally provided me with a road map and a way to explain where I believe IFYE currently stands. What I understood is this: IFYE is at a crossroad and if it doesn't know where it is going, any road will get it there.

Not all of our IFYE colleagues were able to attend the 2004 IFYE Conference in the beautiful State of Minnesota. What the attendees heard bears repeating for the benefit of those who were not able to enjoy the Waves of Today. I hope to answer some questions, propose a route the Association can take, suggest how the Association's membership can participate, and how the Association can arrive at a destination where the decisions about the future of 4-H International exchanges will be made.

What we remember as IFYE's will remain with us in our hearts and minds in the years ahead. What we will come to know as 4-H International programs will need to conform to, in Russ Mawby's words, "What is right for this generation." Russ recalled that IFYE started out as something "audacious." Today, Russ still believes, "We need something audacious."

Let me start down the road by making it clear that the role of the IFYE Board and the IFYE Association is not to manage 4-H international exchanges. Circumstances led to an active interim role in facilitating state/country relations.

Individual states, with the permission of their State 4-H Program Leader, are still able to pursue exchanges. However, I believe national coordination is necessary to bring 4-H International exchanges back to prominence.

The National 4-H Headquarters has oversight of the 4-H program, the 4-H name, and the 4-H emblem. The National 4-H Trust currently dictates what citizenship and international programs are to look like under the

Mawby, Pace and Pressly Honored by IFYE Association



Three IFYE alumni were honored at the 2004 National IFYE Conference for their contributions to 4-H International programs and their communities. They are (l-r) W. Francis Pressly, NC-Italy 1951; Russell G. Mawby, MI-Great Britain 1948; and David E. Pace, IA-Uruguay 1961. Congratulating them is Melvin J. Thompson, MI-Turkey 1953, past president of the IFYE Association.

One of the pioneer IFYE delegates, Mawby is chairman emeritus and an honorary trustee of the W.K. Kellogg Foundation. He served as the Foundation's chief executive officer for 25 years. A 4-H member, volunteer leader and Extension staff member, he was Michigan's state 4-H leader in the several years prior to joining the Kellogg Foundation in 1965. He was instrumental in obtaining financial support for National 4-H Council, 4-H International exchanges, the IFYE Association's Futuring Conference and for the 50th Anniversary celebration at the National 4-H Center during the 1998 World IFYE Conference in Washington, D.C. In retirement he continues his community involvement, promotion of volunteerism in Michigan through the Michigan Community Service Commission, which he helped establish, and continues to promote international programs and global understanding.

A 4-H member in the 1950s and Extension Agent 1963-68 in Iowa, Pace then went east to Washington and then north to Minnesota. He was a 4-H Fellow with the Federal Extension Service and assisted with 4-H international programs at National 4-H Council 1968-70. He then joined the Minnesota state 4-H staff and retired last year after 33 years of leadership for citizenship, teen and junior leadership, and 4-H International programs. He was president of the IFYE Association in 1968. He recently served as chairman of the 4-H International Program Committee (IPC) – formerly the 4-H Japanese Exchange committee. He is currently chairman of the Minnesota Partners program with Uruguay and is on the board of directors for the International Institute of Minnesota.

Pressly, a national 4-H citizenship winner and a member of the 4-H Report to the National team in 1952, served 25 years on the National 4-H Council staff – first as an IFYE Fellow, then as the first director of the 4-H Peace Corps project in Brazil and then 20 years as director of programs – both domestic and international. He was the primary force in establishing the 4-H Young Agricultural Specialists Exchange Program (YASEP) with the Soviet Union. His career with 4-H included serving as an Extension 4-H Agent in North Carolina. He helped organize the North Carolina IFYE Alumni Association, has served on the NC 4-H Development Fund Board, and is active with his local Rotary Club – serving on the board of directors and as chair of the International Committee and Exchange Programs. ★

umbrella of 4-H World Citizenship.

With this said, the only role of the IFYE Board is to manage the financial and business aspects of the Association. In part, the role of the Association is advocacy, support, and promotion of 4-H international exchanges. The Board and Association can recommend a course of action, but neither has the authority to operate a national program.

The IFYE Association Board and the IFYE Foundation are currently acting on a letter addressed to the Association from Joe Hunning, chair of the International Program Committee (IPC). The IPC currently oversees programs like FLEX (Future Leaders Exchange) and the Japanese Exchange Program. The letter provides an opening to explore an alliance with the IPC. This could well be the destination we seek.

I have been directed by the Board to pursue this course of action along with Directors Jennifer Anderson and Mary Kay Munson.

It is critical for you as Association members to seek out your State 4-H Program Leaders. You are the greatest lobbyists. The future of 4-H International exchanges rests in your advocacy.

I wish with all my heart that things could remain the same. The reality is they can not. Although the journey is not complete, I am certain that a form of 4-H International travel will arise that addresses "What is right for this generation." It will provide opportunities for exchanges and building of memories that will remain for years to come.

David J. White
California-Philippines 1979
President ★

2004 Conference...continued from page 1

children - enjoyed McGuire's workshop on playing the jaw harp and spoons.

The conference service project provided funds and school bags to be sent to Tanzania via Operation Bootstrap Africa (www.operationbootstrapafrica.org). Northern Lights, a local 4-H Club, sewed colorful handbags from fabric donated by Minnesota alumni and youth attending the conference helped fill them with school supplies provided by those attending the conference.

(Related conference articles throughout this issue, including a photo spread in the centerfold.) ★

FROM THE ARCHIVES...



Mary Corcoran Harp, OH-Ethiopia 1969, and the late Gary Mogge, KS-Ethiopia 1970, share an "Ethiopian" moment during Gary's return home to Kansas via Mary's home in Ohio. Today, Mary and Betsy Hurtt Moore, OH-India 1969, continue as editors of "In Touch," the annual newsletter for the 1969 delegates to Africa, the Caribbean, South America, South Asia, and the South Pacific.

Minnesota Alumni Honor Leonard and Maxine Harkness



Minnesota 4-H International alumni will tell you that the name Harkness is synonymous with 4-H International programs...and they honored Leonard and Maxine Harkness during the National IFYE Conference they hosted in June of this year. Marlene Mattila Stochr, MN-Finland 1953, considered it an "honor and privilege" to be able to represent Minnesota alumni in introducing them and their granddaughter, Mitra Milani Engan.

"Leonard retired after serving 30 years as the state 4-H leader and he would be first to acknowledge that this was possible because of the graciousness of the young woman from Texas he married as a

young man serving in World War II. Leonard brought people home for meals, for overnights, for many nights... because he is a true People Person and Maxine made everyone feel welcome. He ran the IFYE program. The Minnesota IFYE Alumni Association was organized in their basement, and so we can say that the roots of this conference go back to that home on Tatum Street in Falcon Heights, Minnesota," shared Marlene.

"Leonard and Maxine have traveled the world," she continued, "Many of us traveled with them to the World IFYE Conference in New Zealand in 1977. Leonard shared what it meant to revisit, in a more peaceful time, the area of the

world where his mission had once been to destroy. Earlier, when they were traveling in Europe, he introduced his daughter Marsha to Rahim Milani, the charming young Persian man who became his son-in-law. Rahim and Marsha raised their children in Papua New Guinea, where they continue to live and work. Mitra represents that generation here this evening."

A standing ovation emphasized the appreciation, love and respect that alumni worldwide have for the Harkness' and for others like them in the U.S. and around the world who have recognized the importance of international relationships and given so much to make 4-H International programs possible.

2004 U.S. Delegates

Thirteen U.S. delegates representing seven states and 25 inbound exchangees hosted by 12 states participated in the 2004 IFYE Representative program. Mid-west IFYE Ambassador group programs to Australia and Mexico were coordinated by Wisconsin and to Finland by Missouri.

The U.S. IFYE Representative delegates are: Shelley L. Bolesta, CO-Switzerland; Robert E. Dobbins, CO-Australia; Melissa Ann Kniewel, CO-Luxembourg; Jaime M. Lizee, CT-Finland; Luke E. Sourk, KS-United Kingdom; Jacob Slusser, MI-Australia; Eric D. Dunn, MT-Switzerland; Maristela Guillen, NM-Denmark; Hannah E. Garrett, NM-Germany; Amber V. Groseclose, VA-Austria; Beth Ann Hanneman, VA-Greece/Estonia; Caroline D. Boyd, VA-Sweden; and Brian K. Beck, VA-Switzerland.



The Mid-west IFYE Ambassador group to Australia during their orientation coordinated by Wisconsin.



Mid-west U.S. delegates and inbound exchangees during a group orientation in Kansas City coordinated by Kansas.



Michigan 4-H Emerald Clover Society

The Michigan 4-H Emerald Clover Society honors former Michigan 4-H members whose professional leadership and community service reflect the ultimate outcome of 4-H membership - extraordinary use of an individual's head, heart, hands and health to make communities, the country and the world better places in which to live. Four Michigan IFYE alumni are among the 78 who have been honored. Marjory McPherson Veliquette, MI-Nepal 1966, and Melvin J. Thompson, MI-Turkey 1953 were inducted in June of this year; Russell G. Mawby, MI-Great Britain 1948, and Henrietta Vereyken Hensler, MI-Luxembourg 1956, in 2002. Pictured at the 2004 induction ceremony at the Kellogg Center on the campus of Michigan State University are (l-r) Norman Veliquette, MI-Brazil 1965; Marjory Veliquette; M. Peter McPherson, president of MSU; Betsy Knox, Program Leader with the State 4-H Staff, and Melvin Thompson. The four recipients are all MSU graduates. This recognition is provided every two years by the Michigan 4-H Youth Development program with support of the Michigan 4-H Foundation.



1956-57 4-H and IFYE Fellows Reunite in St. Paul

Seven 1956-57 Extension 4-H and IFYE Fellows reunited following the National IFYE Conference in St. Paul. In attendance were (seated l-r) Patricia Redhage Reed, MO-Chile 1954; Ann Thompson, AL; Virginia White Alford, MO; and (standing l-r) David Reed, MO; Francis Pressly, NC-Italy 1951; Harlan Copeland, MN; Melvin Thompson, MI-Turkey 1953; Joan Engle Wieckert, KS-Denmark, 1952; and David Wieckert, WI-Sweden 1952. Ann, Virginia, Harlan and Joan were on 4-H Fellowships; Pat, Francis and Mel on IFYE Fellowships. Extension 4-H Fellowships in the 1950-60s were provided by USDA/Extension/4-H; IFYE Fellowships by National 4-H Council. Both fellowships provided an opportunity to associate and work with staff at the respective institutions and pursue graduate study.



ISLY Membership Campaign

Are you a member of ISLY (IFYE Society of Ladies Young)? Matron Beth Gehrke, IL-Switzerland 1979, and those attending the National IFYE Conference in St. Paul, invite you to join.

Strict membership guidelines include required conference attendance - the next initiation will take place in Chatham, Ontario, in June 2005. Some of the charter members are pictured below (left to right) with Gehrke: Jennifer Barton, NH-Botswana 1997; Stephany DuVall, GA-Denmark 1999; Jennifer Vukonich Anderson, MT-Estonia 2000; Laura Schick, CO-Luxembourg 1999; Helen Obernagel, IL-France 1978; and Ruth Trail (front) ID-Netherlands 1982. Looks like Paul Langseth, MN-New Zealand 1978, is being removed from a membership attempt!

Gehrke writes on return from St. Paul, "It was very enjoyable and enviable to watch the more senior members socialize after having shared their exchange experience and many years of conference attendance. It is obvious that life-

long friendships had been formed and are greatly cherished. In order to form a more perfect union of young IFYE women and develop such lifelong friendships, we recognize the need for recent participants to do some bonding." Spontaneous bonding at the conference included riding the roller coaster at Mall of America, laughing, dancing, playing spoons, wine tasting, and shopping for head ornamentation. There were more young women in attendance and many that weren't. ISLY has been formed with this in mind. ISLY and their Concierge Dance Meister (that must be Paul?) are busy planning for 2005. For more information, contact Matron Beth at Bcgehrke20@aol.com.

Other ISLY charter members in St. Paul (see bottom centerfold) included Hope Jorns Heslop (top), IL-Thailand 1981; and (l-r) Janet Ahlstrom Risinger, MN-Trinidad and Tobago 1978; Lynn M. Vacca, CA-People's Republic of China 1982; and Nanette L. Prater, IL-Netherlands 1979.



1954 IFYE Delegates Celebrate 50th Anniversary

Eighteen of the 1954 IFYE Delegates celebrated their 50th anniversary at the National IFYE Conference in St. Paul. Those attending (l-r back) included: Maurice Johnson, ID-Sweden; Wilda Jean Adams Miller, VA-Finland; Helen McHugh Brauer, MO-Germany; Phyllis McInturf Brown, OH-Sweden; Mary Wengryn, NJ-Finland; Jewell "Judy" Ballard Estill, CA-England/Wales; Marie St. Martin Pizzutello, CT-France; Harlan Copeland, representing his late wife, Ann Mullendore Copeland, IN-France; (second row) Mary Detlor Gardner, WI-Denmark; Luella Cox Hilston, KS-Sweden; Dorothy Hilton Linse, WI-England/Wales; and (seated) Betty Bargeloh Gall, WV-Switzerland; Patricia Redhage Reed, MO-Chile; and Clarence A. Champlin, CA-Costa Rica. Others attending not pictured were Eldon "Bud" Aupperle, IL-Chile; Frances Brink Berg, MT-Switzerland; Rhoda Kelly Reini, MI-Greece; Mary Alice Todd Schlesener, KS-Ireland/North Ireland; and Dorothy Blaser Struebing, NE-Germany.



Mastering the Jaw Harp



The Jaw Harp Performance



On Tour



Artist-in-Residence



The Capital Rotunda



Passing the Swiss Bell



The Registrars



Sculptors at Work



Come on - Let's Hear It!



More ISLYs



At the Capitol



School Bags for Africa



Barbershoppers



- St. Paul, Minnesota



Tou "Cool"



A Salute to the Elderly



OK Mom, Show'em!

National IFYE Conference
St. Paul, Minnesota
June 23-27, 2004



Ol' Timers



The Board at Work?

2005 National Great Lakes IFYE Conference

June 21-25-2005

Chatham, Ontario, Canada

The Great Lakes Conference Committee, with Michigan as the host state, has planned a conference giving you an opportunity to learn about the importance of the Great Lakes and to celebrate the shared history of the USA and Canada and to what makes each unique. It will be a once-in-a-lifetime experience in "Another World Close to Home."

The program features a spellbinding Opening Gala Ceremony at the Chatham Cultural Center, a Soul Food supper honoring the black tradi-

tions of the Underground Railroad, the 25th/50th Anniversary luncheon, a Concert in the Park by the Chatham Concert Band, a choice of seven different tours as outlined below, a Fish Fry at Morpeth Community Centre and evening entertainment on the shores of Lake Erie, an opportunity to support the Ryan's Well Foundation (see below), and a special International Banquet and Candlelighting Ceremony.

The following tours will be available on Thursday of the conference. Select from this list when completing the registration form:

Tour 1 - Trails of the First Nations (Aboriginal Heritage). Follows the War of 1812 along the Thames River to the place where Chief Tecumseh fought his final battle against the Americans. The stop is the recreated 1,000 year old Ska-Nah-Doht Iroquoian Village and nature center.

Tour 2 - What Grows in the Banana Belt (Agriculture). Highlights the agricultural diversity of the area. Sheepdog demonstrations an added attraction. The tour concludes at the campus of Ridgeway College where local agricultural research and education is undertaken.

Tour 3 - Follow the North Star (African Canadian Heritage). Traces the destination of the fugitive slaves through the Underground Railroad and the lives of our black citizens as they found freedom in a new country in the 19th century.

Tour 4 - Innovation/Renovation (Industrial). Visits several sites where industrious innovators are changing our future with new ideas and products. The tour finishes at RM Classic Cars, the home of the premier automobile restoration firm on this continent.

Tour 5 - Follow the Worship Trail (Faith). Visits three historic churches and allows travelers to walk along the Rosary Trail, a path honoring many saints and religious events. The tour also stops at a stained glass restoration and pottery gallery during the day.

Tour 6 - Down the Garden Path (Flowers). Visits several gardens, both public and private. The tour includes a stop at a local nursery, lunch in the garden of a local magistrate and concludes in the ornamental horticultural facility at Ridgeway College.

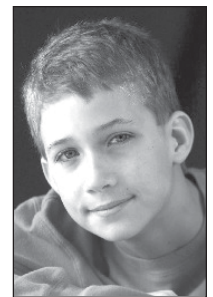
Tour 7 - Imagination/Recreation (Children). A special tour for children visiting the Children's Museum and Storybook Gardens in London and Ska-Nah-Doht Indian Village. Adults may accompany children on this tour if they wish.

Post-conference tours are available to the Stratford Shakespearean Festival, Niagara Falls and Pelee Park through Forsyth Travel - 1-800-363-3276 (www.forsythtravel.com).

Additional information is available on the conference website - www.2005ifyeconference.com

The Ryan's Well Foundation will be the recipient of the funds generated by the conference fundraising projects. Ryan Hrejac of Kemptonville, Ontario, was only six years old when he decided that money from his chores would go to help provide water wells for the people of Africa. Now 13, Ryan and his family have raised over \$800,000. Ryan (right) is just an ordinary boy with an extraordinary goal to help make the world a better place for all. Ryan and his family have been invited to the conference to receive the funds.

Chair Geraldine



2005 National Great Lakes IFYE Conference

June 21-25-2005

Chatham, Ontario, Canada

Conference Registration

All currency on this form is in USA dollars

(Canadians – contact jandgcam@hotmail.com for separate form)

Please - One Person per Page

Full name _____ Name for Name Tag _____

Mailing Address _____

Home phone _____ Work phone _____ E-mail _____

Name of Program _____ Host Country _____ State Represented _____ Year _____

Or: Host States _____ Country Represented _____ Year _____

Or: Host family _____ Friend of 4-H International _____ Other _____

Confirm registration by E-mail _____ mail _____ Mode of travel to conference: fly _____ drive _____

I agree to allow my contact information to be put on a list for other conference participants. Yes _____ No _____

Special conference needs (food, physical, other) _____

I met my spouse at an IFYE activity _____ and our wedding date was _____

Full Conference Registration Adult 20+, Youth 13 – 19, Child 4 – 12

Includes all meals and activities from Tues. 5:00 p.m. to Sat. 10:00 a.m as described in program

Postmarked by Dec. 31, 2004 Adult \$225, Youth \$190, Child \$110 \$ _____

Postmarked Jan. 1 to Mar. 31, 2005 Adult \$250, Youth \$210, Child \$125 \$ _____

Postmarked Apr. 1, 2005 or later Adult \$275, Youth \$230, Child \$140 \$ _____

2005 Inbound IFYEs or 2004 & 2005 Outbound IFYEs (first 25 registered) \$140 \$ _____

Partial Conference Registration Adult 20+, Youth 13 – 19, Child 4 – 12

Includes each day's meals and activities as described in program (no official photo or Sat. meal)

Tuesday, June 21, 2005 Adult \$ 35, Youth \$ 25, Child \$ 15 \$ _____

Wednesday, June 22, 2005 Adult \$ 65, Youth \$ 50, Child \$ 35 \$ _____

Thursday, June 23, 2005 Adult \$ 85, Youth \$ 85, Child \$ 50 \$ _____

Friday, June 24, 2005 Adult \$ 85, Youth \$ 70, Child \$ 40 \$ _____

Friday, International banquet only Adult \$ 45, Youth \$ 45, Child \$ 45 \$ _____

TOTAL REGISTRATION ENCLOSED Payable to 2005 National IFYE Conference \$ _____

Full registration refunds are available up to March 31, 2005. Service charge of \$15 per delegate after March 31, 2005.

Thursday tour choice (refer to program) 1st choice # _____ 2nd choice # _____ 3rd choice # _____

Official group photograph (free copy to each fulltime adult delegate who requests here) _____

Monday June 20 rural overnight billet (free accommodation, \$10 transport fee, pay at bus) _____

Registration does not include the following:

Wheels Inn hotel 1-800-265-5257 www.wheelsinn.com

Robert Q airport bus 1-800-265-4948 www.robertq.com

Forsyth post tours 1-800-363-3276 www.forsythtravel.com

Mail Registration to:

2005 National IFYE Conference

c/o Henrietta Hensler

5164 Clydesdale Lane

Saginaw, MI 48603-2884

National IFYE Association 2005 Annual/Lifetime Dues payable at the conference.

Life membership number (if applicable - see L-# on mailing label) _____

Further registration information: Henrietta Hensler 989-792-7516 SKIPbasket@AOL.com

Further conference information: Geraldine Campbell 519-380-0458 jandgcam@hotmail.com

IFYE Foundation of the USA

IFYE Foundation Update

Norman C. Bauer Elected President

Yes, there has been a change. I am now serving as President of the IFYE Foundation of the USA. Although I wasn't seeking the position, the IFYE Association and the IFYE Foundation are at a crossroads or, if you like, a "Y" in the road, and I feel the need to continue my goal of changing the IFYE program into a format that will meet the needs of the twenty-first century.

As president of the IFYE Foundation, I have the commitment and the responsibility of seeking financial support for the IFYE program. As we all know, the IFYE program has become a State/Country exchange. Can the Foundation support these exchanges? Yes, of course, but first we need to implement a process to support those wishing financial support. The Foundation has supported exchanges the past two years with a grant to the IFYE Association to cover health and accident insurance and to assist in equalizing travel costs for IFYE Representative delegates.

The good news coming from the National IFYE Conference in St. Paul in June is that the 4-H International Program Committee (IPC) is anxious to work with the IFYE Association and IFYE Foun-

ation in creating an exchange program that will benefit all factions. Joe Hunnings, the current president of IPC, has been in contact with both David White, president of the IFYE Association, and me. We both hope to attend their fall meeting and explore the options.

A majority of those attending the St. Paul Conference supported the IFYE Foundation conducting a fall solicitation. We will be mailing a solicitation. Those who have contributed to the IFYE Foundation since the spring issue of IFYE News through August are listed below.

Norm Bauer, President

IFYE Foundation Contributions

Dottie Nelson
in memory of Robert Batty

Debra Nester
in memory of Robert Batty & Faulton Hodge

Jamie Tomek
in memory of Robert Batty & Faulton Hodge

Donald and Rita Hammerla
in memory of IFYE Alumni deceased in 2004

Marjorie Loyd
in memory of John Oltjen, Tom Gray, Robert Batty and Faulton Hodge

IFYE Foundation Board of Directors

President—Norman C. Bauer, MI-Turkey 1957, Anna, IL
(nbauer@aj-internet.net)

Vice President—Marjorie M. Loyd, KS-Israel 1968, Topeka, KS
(mloyd1@cox.net)

Secretary—Richard W. Tenney, OH-France 1959, Brooktondale, NY
(rwt1@cornell.edu)

Treasurer—Eldon R. "Bud" Aupperle, IL-Chile 1954, 29470 Saxon Road, Toulon, IL 61483-9205 (aupperlee@bhc.edu)

Members—William Lefes, PA-Switzerland 1949; Mary E. Henningsen Ottmar, IA-Netherlands 1971; Doug Putnam, CT Supporter; Betty Stephenson, IA-England/Wales 1952; Thomas Trail, ID-Nepal 1956; Wesley Tschetter, SD-Israel 1969; Mildred C. Weidemann, VA-Israel 1955

Advisors—Charles Larson, CT-Denmark 1948; Russell G. Mawby, MI-Great Britain, 1948

Ex-Officio—David White, CA-Philippines 1979, President, IFYE Association

The Value of Giving

Contributors to the IFYE Foundation have often honored a loved one or friend. Memorial gifts honor those who have lived a life of service. Making gifts in recognition of others offers a wonderful way to affirm your personal priorities and values.

Gifts in cash or check are the most common method of giving. They are convenient and tax deductible as allowed by law. Other property, such as stocks and bonds which may have gained in value, offer the benefit of tax savings with the opportunity to avoid capital gains tax on any increase in value.

Consider a gift which will continue the impact of your international experience. Designating the IFYE Foundation as beneficiary in an insurance policy or your will extends your values to others.

Contributions should be sent to: Treasurer, IFYE Foundation, 29470 Saxon Road, Toulon, IL 61483.

For a brochure or information about special gifts you might wish to consider, contact Norman Bauer, President, IFYE Foundation, 111 Woodland Trail, Anna, IL 62906; nbauer@aj-internet.net or 618/833-3228 ☆

Mary Kay Munson
in memory of Cynthia Pearson Walker,
Tom Gray, Faulton Hodge, Robert Batty,
and George Lindahl

Thomas & JoAnn Trail
in memory of Robert Batty and Tom Gray

Caron N. & Kristine G. Beard
in memory of Faulton Hodge, Tom Gray
and Robert Batty

Robert E. Ellis
in memory of Faulton Hodge, Tom Gray
and Robert Batty

Anniversary Fund

The Anniversary Fund was established by the 1948 delegation on the occasion of their 40th Anniversary and endorsed by the IFYE Association at the National IFYE Conference in Kansas in 1988. All 4-H International alumni are encouraged, on their five-year anniversaries, to donate \$1 for each year since participation. These funds are designated for exchanges where there are special needs. The following have contributed in 2004:
Wesley Tschetter
Bud Aupperle

Armin Samuelson
Betty Stephenson
Dorothy Linse
Phyllis Brown
Betty Gall
Linda Carr
Caroline Gardner
Linda Keech
Elaine Wolff
Virginia Aupperle
John Werner
Linda Eppelheimer
Mary Ball Massey
Margaret Dixon
Stan Dreyer
Don DeWeese
Genevieve C. Lervik
Dorothy Faidley
Mary Wengryn
Carol L. Skelly
Catherine A. Solheim
Jean Miller
Laura Schick
Helen Brauer
Marie Pizzutello
Santee Prouty
Larry Wachtel
Tony Frank ☆



The IFYE Foundation of the USA board of directors at the time of their annual meeting in June 2004: (l-r) Richard Tenney, Secretary; Norman Bauer, President; Mildred Weidemann; Eldon Aupperle, Treasurer; Betty Stephenson; Stanley Dreyer, Immediate Past President (Retiring); Thomas Trail; Armin Samuelson (Retiring); Marjorie Loyd, Vice President; Wesley Tschetter; and David White, president, IFYE Association.

IFYE Association Membership

The IFYE Association recognizes the following who have become life members in 2004, bringing the total life memberships to 1,119. These, along with the 101 annual members, makes a total of 1,220 paid memberships in 2004.

Bonita Russiff Schott, MT-Italy 1985
 Marian Pike Huey, MI-Norway 1955
 Peter R. Scheffert, MN-Botswana 1983
 Mary Beth Rosendahl, MN-Thailand 1978
 James E. Gleason, MI-Austria 1958
 Sarah Curtis Rutkai, CA-Chile 1956
 Janice C. Roper, FL, Friend
 Janet B. Thomas, OH-Scotland 1958

IFYE Association Contributions

The following have provided contributions in support of the IFYE Association since the last issue of IFYE News:

Elizabeth D. Kleckner
 Constance S. Robinson
 Keith E. George
 David D. Gaumer
 James E. Morgan
 Sharon Lee Mueller
 Howard F. Parks
 Keith D. Burt
 Irlene Rawlings Huntington
 Madeleine Greene Wojciechowski
 Sarah Curtis Rutkai
 Peg Chrisman Lakin
 Anita Johnson Whisney
 Verle E. Lanier
 Helen Enstrom
 Ronald Petrak
 Erna K. O'Brien
 Jack L. Morse
 Donna J. Herchberger
 Melvin J. Thompson
 Larry D. Williams
 Wayne Sharp
 Jane Markert Moody
 Herbert Brown
 Karen Herman DeMuro
 Lawrence A. Fenske
 Dorothy I. Bickling

In memory of Paul Hoshiko, Jr

IFYE News Deadline

IFYE News is published quarterly; deadline for the next issue - January 15. Send items and/or suggestions to editor (address page 2).★

Association Memberships, Contributions & Address Changes

Name: _____ Maiden Name: _____
FIRST MI LAST
 Address: _____ New Address/Information?
 City: _____ State: _____ ZIP: _____ Phone: _____
 Program: _____ State Represented: _____ Host Country: _____ Year: _____
 Extension Staff: _____ Host Family: _____ Friend of IFYE: _____ Other: _____
 email: _____

2005 Annual Membership Dues @ \$25 single/\$40 married couple (calendar year) \$ _____
 Life Membership @ \$300 single/\$400 married couple \$ _____
 Contributions to the IFYE Association of the USA
 are Tax Deductible to the Extent Provided by Law
 IFYE Association General Operational Support * \$ _____
 Total Amount Enclosed Thank You! \$ _____

* (Optional) Contribution in Memory of _____
 Contribution in Honor of _____

Acknowledgement (omitting amount) should be sent to: _____

Comments/Questions: _____
 Name/Address/ZIP _____

**Please make checks payable to IFYE Association of the USA.
 Mail to: IFYE Association, 653 Meadows Rd. #1, Jefferson, NH 03583.**

For contributions to the IFYE Foundation of the USA, see page 10.

The IFYE Shoppe...

IFYE Shirts

Children, "Future IFYE" t-shirts youth sizes 6-8, 10-12 and 14-16 at \$6. Each shirt has a colorful design on a light gray background.

Adult, IFYE "Flag" t-shirt white with full-color IFYE logo and 12 flags of the world. Available in XL, \$12; and XXL, \$14.

IFYE golf shirts are 100% pre-shrunk cotton. Embroidered green and white with "4-H International" over IFYE logo. Tri-colored polo white with green collar and sleeve trim and blue placket, available L-XXL \$32 and XXL \$34. Putty color polo available S-XXL \$29.

Baseball caps cotton or mesh fabric. Cotton cap in khaki with adjustable band \$14. Logo on cap embroidered in green and white with "4-H International" over IFYE logo. On green mesh hat, IFYE logo silk screened in white; adjustable with plastic band \$4.

Other Items

- ★ Travel/waist pack with IFYE logo embroidered in green \$5.
- ★ Post-it Notes \$1.25 for a 50-sheet pad.
- ★ IFYE logo slide, \$1
- ★ IFYE logo lapel pin, \$4

Volume Purchases

Having an event? IFYE merchandise available on consignment.

Contact manager Leona Noffsinger-Maggitti.

How to Order

Complete order form. Mail with check/money order payable to: IFYE Association of the USA

Email or call to check availability (301/898-3533, email maggittil@adelphia.net). ★

Order Form

Send with payment to: IFYE Shoppe,

11127 Old Frederick Road, Thurmont, MD 21788

Name: _____
 Street Address: _____
 City: _____ State: _____ ZIP: _____
 Telephone: _____
 Email: _____

Item	Qty.	Size/Color	Price
_____	_____	_____	\$ _____
_____	_____	_____	\$ _____
_____	_____	_____	\$ _____

Shipping & Handling (see below) \$ _____

Total: \$ _____

Shipping & Handling
 Up to \$30.00 \$4.00
 \$30.01-\$75.00 \$6.00
 > \$75.01 call for quote



In Memoriam

The IFYE Association has recently received word of the death of the following 4-H International alumni, spouses and Association supporters and members (L - Life Membership).

- ★ John L. Oltjen, KS-Australia 1954, L-0213, March 15, 2004, Robinson, KS
- ★ Shirley Holmes Mills, IA-Germany 1955, L-0467, August 10, 2004, Marine, IL
- ★ Rachel Irene Mueller, IL-Chile 1952, July 27, 2004, Urbana, IL
- ★ Suzanne McWhinney McMurry, IL-New Zealand 1964, July 2004, Rockford, IL
- ★ Calvin W. Funk, UT-Finland 1950, 2002, Richmond, UT
- ★ Henry Waelti, husband of Dorothy Teel Waelti, WA-Germany 1954, June 2004, Pullman, WA
- ★ Carl Zahn, Switzerland's Director of Agriculture and Coordinator of the IFYE Program in the 1960s, 2003

The IFYE Association would like to update their records to reflect all 4-H International exchange alumni and spouses, program staff and other Association members who are deceased. Please send full name, State-Country-Year or relationship to program, date of death, and address at that time, to Ifyeassociation@aol.com or IFYE Association, 5811 Lone Oak Drive East, Bethesda, MD 20814. Deceasedments, corrections and updates are appreciated. ★

December 5: International Volunteer Day

International Volunteer Day (IVD) - December 5! This special day was designated by the UN General Assembly in 1985 for an annual celebration by communities, people and governments of all that is achieved by volunteers around the world.

IVD is for volunteers of every kind, everywhere! Whether you offer your talents to improve your community, donate to charity, provide companionship to the elderly, or volunteer in developing countries, IVD is for you. Make an extra effort on or around December 5, 2004! ★



International Four-H Youth Exchange
Association of the USA
5811 Lone Oak Drive E
Bethesda, MD 20814-1843

ADDRESS SERVICE REQUESTED

Non-Profit Org.
U.S. Postage
PAID
Champaign, IL
Permit No. 453

VISIT US AT:
WWW.IFYEUSA.ORG



Moving? New 911 Address?
Send mailing label corrections to the IFYE
News return address above or
Ifyeassociation@aol.com

2005 Dues Now Due!

Paid your dues? Now is the time! Become an Association member today - only dues paying members will receive all issues of IFYE News and Association mailings. All exchange participants attending the National IFYE Conference are expected to have paid dues or do so on arrival. Do it today - complete the form on page 11 and become an annual or life member. If already a life member - contribute to the Association's general operational support. ★

Address Changes

Alumni are hard to keep up with.....and difficult to track!
- 911 Addresses -

Still using a rural route/box address? We get many returns as the postal service will not deliver if you now have a "911" road/street address.

We have to pay a minimum of 70 cents for returns and the postal service doesn't always give new address - especially if several months have lapsed since the change. ★



1953 Australia/New Zealand Delegates Celebrate 50th Anniversary

The entire 1953 U.S. delegation to Australia and New Zealand, with all spouses, celebrated their 50th anniversary at the Stephens' home in Arkansas. Enjoying an outing at the time are the eight delegates (l-r): Carroll Huston, MD-NZ; Lester Miche, IL-AU; Jack Crowner, MI-NZ; Audrey Mooy East, IN-AU; Jerry Morel, WY-AU; Diana Hebrink Hanson, MN-AU; Wanda Brewer Stephens, AR-NZ; and Sue Terry Crowner, KY-NZ. Their every two-year reunions started in 1990. In 2005, they will gather at the Hanson home in Minnesota.



Index of this Issue	Page
50th Anniversary Alumni	5
Address Changes/Updates	11, 12
Announcements/Alerts	11, 12
Association Awards	3
Association Board	2
Association Contributions	11
Association Dues/Membership ..	11, 12
AU/NZ 1953 Delegate Reunion	12
Conference Photos	6, 7
Conference Registration Form	9
Deaths - In Memoriam	12
Editorial	2
Foundation Board	10
Foundation Contributions	10
Foundation News	10
From the Archives	4
Harkness Recognition	4
IFYE Participants 2004	4
IFYE Shoppe	11
IFYE/4-H Fellows Reunion	5
International Volunteer Day	12
ISLY Membership	5
Michigan 4-H ECS	5
National Conference 2004	1, 6, 7
National Conference 2005	1, 8, 9
President's Message	3
Salute to Minnesota	2
Tou "Cool" Ger Xiong	1, 7